

# Upper Missouri District Health Unit

## *Mountrail County Community Health Profile*

Authors:

Tracy K. Miller, PhD, MPH  
State Epidemiologist

Kodi Pinks, MPH  
Epidemiologist

March 2018



# TABLE OF CONTENTS

Data Sources .....	i
Photograph Credits .....	i
<b>POPULATION DATA</b>	
Table 1: Population by Age Group .....	1
Table 2: Female Population and Percentage Female by Age .....	1
Table 3: Race .....	1
Table 4: Household Populations .....	2
Table 5: Population Change .....	2
Table 6: Marital Status of Persons Age 15 and Older .....	2
Table 7: Educational Attainment Among Persons 25+ .....	2
Table 8: Persons with Disability .....	3
Table 9: Income and Poverty Status by Age Group .....	3
Table 10: Family Poverty and Childhood and Elderly Poverty .....	3
Table 11: Age of Housing .....	3
<b>VITAL STATISTICS DATA</b>	
Birth and Deaths Definitions .....	4
Table 12: Births .....	5
Table 13: Child Deaths .....	5
Table 14: Deaths and Age Adjusted Death Rate by Cause .....	5
Table 15: Leading Causes of Death by Age Group for County .....	6
Table 16: Leading Causes of Death by Age Group for North Dakota .....	6
<b>ADULT BEHAVIORAL RISK FACTORS</b>	
Table 17:	
• Adult Behavioral Risk Factors Definition .....	7
• Alcohol .....	8
• Arthritis .....	8
• Asthma .....	8
• Body Weight .....	8
• Cancer .....	8
• Cardiovascular .....	8
Table 18:	
• Cholesterol .....	9
• Chronic Lung Disease .....	9
• Colorectal Cancer .....	9
• Diabetes .....	9
• Fruits and Vegetables .....	9
• General Health .....	9
Table 19:	
• Health Care Access .....	10
• Hypertension .....	10
• Immunization .....	10
• Injury .....	10
• Oral Health .....	10
• Physical Activity .....	10
• Tobacco .....	10
• Women’s Health .....	10
<b>CRIME</b>	
Table 20: County .....	11
Table 21: North Dakota .....	11
<b>CHILD RISK</b>	
Table 22: Child Indicators—Education .....	12
Table 23: Child Indicators—Economic Health .....	12
Table 24: Child Indicators—Families and Child Care .....	12
Table 25: Child Indicators—Juvenile Justice .....	12

## Data Sources

The Demographic Section of this report comes from the US Census Bureau ([www.census.gov](http://www.census.gov)). Most tables are derived either from the census estimates for 2015 or from the Community Population Survey aggregated over a several year period. The table header describes the specific years from which the data is derived. The tables present the number of persons and percentages which in almost all circumstances represent the category specific percentage of all persons referenced by the table (e.g., percentage of persons age 15 and older who are married). Age specific poverty rates represent the percentage of each age group in poverty (e.g., percentage of children under five years in poverty).

The **Vital Statistics** section of this report comes from the birth and death records collected by the North Dakota Department of Health Vital Records. This data is aggregated over a five year period. All births and deaths represent the county of residence not the county of occurrence. In order to maintain a person's confidentiality, the number of events is blocked if fewer than six.

The **Adult Behavioral Risk Factor** section of this report is derived from the North Dakota Department of Health's Behavioral Risk Factor Surveillance Survey. The aggregated data (the number of years specified in the table) is continuously collected by telephone survey from persons 18 years and older residing in North Dakota. All data is self-reported data.

Data presented in the **Crime** section of this report is collected from the North Dakota Attorney General website located at: [www.ag.nd.gov/Reports/BCIReports/CrimeHomicide/CrimeHomicide.htm](http://www.ag.nd.gov/Reports/BCIReports/CrimeHomicide/CrimeHomicide.htm).

Data presented in the **Child Health Indicators** section of this report is collected from the Kids Count Data Center website located at: [www.datacenter.kidscount.org](http://www.datacenter.kidscount.org).

## Photography Credits

Permission to use cover photos granted by:

- Scott Thomas Photography - Theodore Roosevelt National Park in Winter  
[www.sthomasphotos.com/](http://www.sthomasphotos.com/)
- Jerry Blank – Lightening Storm north of Williston and Sunset over Little Missouri river  
[www.jerryblank.us/gallery-nd.html](http://www.jerryblank.us/gallery-nd.html)
- ND Department of Commerce – Oil wells  
[www.commerce.nd.gov/news/MediaGallery/](http://www.commerce.nd.gov/news/MediaGallery/)
- ND Tourism Division – All other photos  
[www.ndtourism.com/](http://www.ndtourism.com/)



## POPULATION DATA

Table 1

Population by Age Group, 2016 Census Estimates				
Age Group	Mountrail County		North Dakota	
	Number	Percent	Number	Percent
0-9	1,569	15.3%	105,035	13.9%
10-19	1,332	13.0%	93,820	12.4%
20-29	1,682	16.4%	127,579	16.8%
30-39	1,396	13.6%	101,492	13.4%
40-49	1,189	11.6%	79,632	10.5%
50-59	1,370	13.4%	95,466	12.6%
60-69	1,015	9.9%	80,159	10.6%
70-79	426	4.2%	41,996	5.5%
80+	263	2.6%	32,773	4.3%
<b>Total</b>	<b>10,242</b>	<b>100.0%</b>	<b>757,952</b>	<b>100.0%</b>
0-17	2,677	26.1%	176,311	23.3%
65+	1,138	11.1%	109,999	14.5%

Table 2



Female Population and Percentage Female by Age, 2016 Census Estimates				
Age Group	Mountrail County		North Dakota	
	Number	Percent	Number	Percent
0-9	775	16.5%	51,145	13.9%
10-19	624	13.3%	45,349	12.3%
20-29	668	14.3%	58,619	15.9%
30-39	591	12.6%	47,001	12.7%
40-49	566	12.1%	37,992	10.3%
50-59	612	13.1%	46,809	12.7%
60-69	487	10.4%	39,397	10.7%
70-79	205	4.4%	22,236	6.0%
80+	155	3.3%	20,430	5.5%
<b>Total</b>	<b>4,683</b>	<b>100.0%</b>	<b>368,978</b>	<b>100.0%</b>
0-17	1,301	27.8%	85,921	23.3%
65+	565	12.1%	60,025	16.3%

Table 3

Race, Five Year Estimates (2012-2016)				
Race	Mountrail County		North Dakota	
	Number	Percent	Number	Percent
<b>Total</b>	<b>9,675</b>	<b>100.0%</b>	<b>736,162</b>	<b>100%</b>
White	6,359	65.7%	649,730	88.3%
Black	19	0.2%	14,761	2.0%
American Indian	2,784	28.8%	38,369	5.2%
Asian	68	0.7%	9,296	1.3%
Pacific Islander	0	0.0%	336	0.0%
Other	123	1.3%	5,691	0.8%
Multi-race	322	3.3%	17,979	2.4%

## POPULATION DATA

Table 4

Household Populations, 2011 ACS Five Year Estimates				
	Mountrail County		North Dakota	
	Number	Percent	Number	Percent
Total	7,482	100.0%	666,783	100.0%
In Family Households	6,318	84.4%	509,097	76.4%
In Non-Family Households	967	12.9%	132,651	19.9%
Total In Households	7,285	97.4%	641,748	96.2%
Institutionalized*	58	0.8%	9,675	1.5%
Non-institutionalized*	139	1.9%	15,360	2.3%
Total in Group Quarters	197	2.6%	25,035	3.8%

\*2011 is the most recent data

Table 5

Population Change 2000-2015				
Census	Mountrail County	5 Year Change (%)	North Dakota	5 Year Change (%)
2000	6,631		642,200	
2005	6,471	-2.4%	635,365	-1.1%
2010	7,673	18.6%	672,591	5.9%
2015	10,307	34.3%	754,859	12.2%

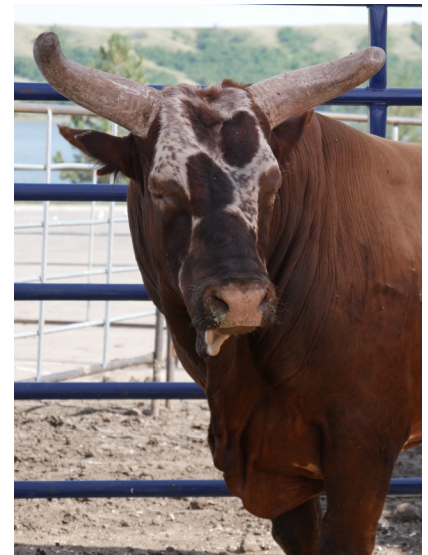


Table 6

Marital Status of Persons Age 15 and Older, 2016 ACS Five Year Estimates				
Marital Status	Mountrail County		North Dakota	
	Number	Percent	Number	Percent
Total Age 15+	7,567	100.0%	594,068	100.0%
Never Married	2,913	38.5%	189,508	31.9%
Now Married	3,458	45.7%	308,915	52.0%
Separated	76	1.0%	5,347	0.9%
Widowed	371	4.9%	33,862	5.7%
Divorced	757	10.0%	56,436	9.5%

Table 7

Educational Attainment Among Persons 25+, 2016 ACS Five Year Estimates				
Education	Mountrail County		North Dakota	
	Number	Percent	Number	Percent
Total	6,137	100.0%	477,607	100.0%
Less than 9th Grade	181	2.9%	16,846	3.5%
Some High School	319	5.2%	21,188	4.4%
High school or GRE	1,809	40.6%	131,086	27.4%
Some College/Assoc. Degree	2,377	38.8%	173,933	36.4%
Bachelor's Degree	1,134	18.5%	97,890	20.5%
Post Graduate Degree	317	5.2%	36,664	7.7%

## POPULATION DATA

Table 8

Persons with Disability, 2016 ACS Five Year Estimates				
Group	Mountrail County		North Dakota	
	Number	Percent	Number	Percent
Total	9,580	100.0%	720,312	100.0%
Any Disability	729	7.6%	77,651	10.8%
No Disability	8,851	92.4%	642,661	89.2%
Self Care Disability	77	0.9%	11,469	1.7%
0-17 with any disability	17	2.3%	5,618	7.2%
18-64 with any disability	432	59.3%	38,310	49.3%
65+ with any disability	280	38.4%	33,723	43.4%

Table 9

Income and Poverty Status by Age Group, 2016 ACS Five Year Estimates				
	Mountrail County		North Dakota	
	Number	Percent	Number	Percent
Median Household Income		\$68,082		\$59,114
Per Capita Income		\$39,285		\$33,107
	Number	Percent	Number	Percent
Below Poverty Level	1,122	11.8%	79,314	11.2%
Under 5 Years	150	13.4%	7,618	9.6%
5 to 11 Years	147	13.1%	8,423	10.6%
12 to 17 Years	116	10.3%	5,349	6.7%
18 to 64 Years	540	48.1%	48,969	61.7%
65 to 74 Years	102	9.1%	3,532	4.5%
75 Years and Over	67	6.0%	5,423	6.8%

Table 10

Family Poverty and Childhood and Elderly Poverty, 2016 ACS Five Year Estimates				
	Mountrail County		North Dakota	
	Number	Percent	Number	Percent
Total Families	2,129	100.0%	183,466	100.00%
Families in Poverty	177	8.3%	12,659	6.90%
Families with Own Children	1,062	49.9%	84,714	46.17%
Families with Own Children in Poverty	137	6.4%	9,912	5.40%
Families with Own Children and Female Parent Only	247	11.6%	23,485	27.72%
Families with Own Children and Female Parent Only in Poverty	87	4.1%	8,408	4.58%
Total Known Children in Poverty	413	15.4%	21,390	12.1%
Total Known Age 65+ in Poverty	169	14.9%	8,955	8.1%

\* Percent family poverty is percent of total families

Table 11

Age of Housing, 2016 ACS Five Year Estimates				
	Mountrail County		North Dakota	
	Number	Percent	Number	Percent
Housing Units: Total	4,722	100.0%	350,134	100.0%
1980 and Later	2,100	44.5%	149,657	42.7%
1970 to 1979	770	16.3%	67,069	19.2%
Prior to 1970	1,852	39.2%	133,408	38.1%

# Vital Statistics Data

## BIRTHS AND DEATHS DEFINITIONS

Formulas for calculating rates and ratios are as follows:

**Birth Rate** = Resident live births divided by the total resident population x 1000.

**Pregnancies** = Live births + Fetal deaths + Induced termination of pregnancy.

**Pregnancy Rate** = Total pregnancies divided by the total resident population x 1000.

**Fertility Rate** = Resident live births divided by female population (age 15-44) x 1000.

**Teenage Birth Rate** = Teenage births (age <20) divided by female teen population x 1000.

**Teenage Pregnancy Rate** = Teenage pregnancies (age <20) divided by female teen population x 1000.

**Out of Wedlock (OOW) Live Birth Ratio** = Resident OOW live births divided by total resident live births x 1000.

**Out of Wedlock Pregnancy Ratio** = Resident OOW pregnancies divided by total pregnancies x 1000.

**Low Weight Ratio** = Low weight births (birth weight < 2500 grams) divided by total resident live births x 1000.

**Infant Death Ratio** = Number of infant deaths divided by the total resident live births x 1000.

**Childhood & Adolescent Deaths** = Deaths to individuals 1 - 19 years of age.

**Childhood and Adolescent Death Rate** = Number of resident deaths (age 1 - 19) divided by population (age 1 - 19) x 100,000.

**Crude Death Rate** = Death events divided by population x 100,000.

**Age-Adjusted Death Rate** = Death events with age specific adjustments x 100,000 population.



# Vital Statistics Data

## BIRTHS AND DEATHS

Table 12

	Mountrail County		North Dakota	
	Number	Rate or Ratio	Number	Rate or Ratio
Live Births and Rate	815	21.4	54,644	16.3
Pregnancies and Rate	894	23.3	59,226	17.6
Fertility Rate		133.5		84.6
Teen Births and Rate	83	71.6	2,715	23.8
Teen Pregnancies and Rate	92	79.3	3,263	28.6
Out of Wedlock Births and Ratio	426	522.7	17,518	320.6
Out of Wedlock Pregnancies and Ratio	498	557.1	21,289	359.5
Low Birth Weight Birth and Ratio	42	51.5	3,448	63.1

Table 13

	Mountrail County		North Dakota	
	Number	Rate or Ratio	Number	Rate or Ratio
Infant Deaths and Ratio	NR	4.9	299	5.5
Child and Adolescent Deaths and Rate	8	83.3	235	28.8
Total Deaths and Crude Rate	409	1,066.1	30,152	896.6

Table 14

	Mountrail County		North Dakota	
	Number	Adj. Rate	Number	Adj. Rate
All Causes	319	740.7	30,303	674.8
Heart Disease	83	166.5	6,571	140.3
Cancer	47	80.1	6,215	142.1
Stroke	9	22.3	1,546	31.9
Alzheimer's Disease	6	10.4	2,130	41.2
COPD	NR	7.9	1,623	35.2
Unintentional Injury	54	173.8	1,764	45.9
Diabetes Mellitus	11	23.0	908	20.6
Pneumonia and Influenza	7	18.9	791	16.5
Cirrhosis	7	22.1	429	11.6
Suicide	16	54.2	630	18.4
Hypertension	6	10.2	467	9.5

NR-Not Reportable



# Vital Statistics Data

## BIRTHS AND DEATHS

Table 15

Leading Causes of Death by Age Group for Mountrail County, 2012-2016			
Age	1	2	3
0-4	Unintentional Injury*	Congenital Anomaly*	Sudden Infant Death*
5-14	Unintentional Injury*	No Reported Deaths	
15-24	Unintentional Injury 7	Suicide*	Heart*
25-34	Unintentional Injury 6	Suicide*	Cirrhosis*
35-44	Unintentional Injury*	Cancer*	Heart*
45-54	Heart 8	Unintentional Injury 7	Cirrhosis 7
55-64	Heart 16	Cancer 7	Diabetes 6
65-74	Cancer 21	Heart 15	Diabetes*
75-84	Cancer 25	Heart 19	Cerebrovascular Disease 6
85+	Heart 31	Cancer 9	Cerebrovascular Disease 6

\*Numbers less than six are not listed.

Table 16

Leading Causes of Death by Age Group for North Dakota, 2012-2016			
Age	1	2	3
0-4	Congenital Anomaly 53	Prematurity 50	Sudden Infant Death 45
5-14	Unintentional Injury 21	Suicide 6	Homicide*
15-24	Unintentional Injury 191	Suicide 127	Cancer 16
25-34	Unintentional Injury 211	Suicide 125	Heart 50
35-44	Unintentional Injury 184	Suicide 107	Heart 99
45-54	Cancer 350	Heart 282	Unintentional Injury 210
55-64	Cancer 1,094	Heart 646	Unintentional Injury 192
65-74	Cancer 1,563	Heart 902	COPD 348
75-84	Cancer 1,793	Heart 1,441	COPD 565
85+	Heart 3,141	Alzheimer's Disease 1,566	Cancer 1,261

\*Numbers less than six are not listed.

## ADULT BEHAVIORAL RISK FACTORS DEFINITION

The following three pages represent data received from the Adult Behavioral Risk Factor Surveillance Survey. Numbers given are point estimate percentages followed by 95% confidence intervals. Statistical significance can be determined by comparing confidence intervals between two geographic areas. To be statistically significant, confidence may not overlap. For example the confidence intervals 9.3 (8.3-10.2) and 10.8 (10.0-11.6) overlap (see picture below) so the difference between the two numbers is not statistically significant. That means that substantial uncertainty remains whether the apparent difference is due to chance alone (due to sampling variation) rather than representing a true difference in the prevalence of the condition in the two populations. The less they overlap, the more likely it is that the point estimates represent truly different prevalence's in the two populations.



## ADULT BEHAVIORAL RISK FACTORS, 2011-2015

Table 17

<b>ALCOHOL</b>		<b>Mountrail 2011-2015</b>	<b>North Dakota 2011-2015</b>
<b>Binge Drinking</b>	Respondents who reported binge drinking (5 drinks for men, 4 drinks for women) one or more times in the past 30 days.	27.6 (21.8-33.4)	24.1 (23.3-24.9)
<b>Heavy Drinking</b>	Respondents who reported heavy drinking (more than 2 drinks per day for men, more than 1 drink per day for women) during the past 30 days.	9.5 (5.2-13.8)	6.7 (6.3-7.2)
<b>Drunk Driving</b>	Respondents who reported driving when they had too much to drink one or more times during the past 30 days.	4.9 (0.2-9.7)	3.4 (2.8-3.9)
<b>ARTHRITIS</b>			
<b>Doctor Diagnosed Arthritis</b>	Respondents who reported ever have been told by a doctor or other health professional that they had some form of arthritis.	23.9 (19.1-28.6)	24.6 (24.0-25.2)
<b>Activity Limitation Due to Arthritis</b>	Respondents who reported being limited in any usual activities because of arthritis or joint symptoms.	52.1 (38.8-65.4)	47.0 (45.2-48.9)
<b>ASTHMA</b>			
<b>Ever Asthma</b>	Respondents who reported ever having been told by a doctor, nurse or other health professional that they had asthma.	12.8 (8.5-17.1)	11.9 (11.3-12.4)
<b>Current Asthma</b>	Respondents who reported ever having been told by a doctor, nurse or other health professional that they had asthma and who still have asthma.	9.7 (6.3-13.0)	8.4 (7.9-8.9)
<b>BODY WEIGHT</b>			
<b>Overweight, Not Obese</b>	Respondents with a body mass index greater than or equal to 25 but less than 30 (overweight).	35.7 (29.5-41.9)	36.5 (35.7-37.3)
<b>Obese</b>	Respondents with a body mass index greater than or equal to 30 (obese).	35.4 (29.4-41.3)	30.3 (29.6-31.1)
<b>Overweight or Obese</b>	Respondents with a body mass index greater than or equal to 25 (overweight or obese).	71.1 (65.1-77.0)	66.8 (66.0-67.7)
<b>CANCER</b>			
<b>Any Cancer</b>	Respondents who reported ever having been told by a doctor, nurse or other health professional that they had cancer (excluding skin cancer).	5.0 (2.6-7.3)	6.4 (6.1-6.7)
<b>CARDIOVASCULAR</b>			
<b>Heart Attack</b>	Respondents who reported ever having been told by a doctor, nurse or other health care professional that they had a heart attack.	2.9 (1.7-4.1)	4.3 (4.0-4.5)
<b>Angina</b>	Respondents who reported ever having been told by a doctor, nurse or other health care professional that they had angina.	2.3 (0.9-3.6)	4.0 (3.7-4.2)
<b>Stroke</b>	Respondents who reported ever having been told by a doctor, nurse or other health care professional that they had a stroke.	2.3 (0.9-3.6)	2.4 (2.2-2.6)
<b>Cardiovascular Disease</b>	Respondents who reported ever having been told by a doctor, nurse or other health care professional that they had any of the following: heart attack, angina or stroke.	5.3 (3.5-7.1)	7.5 (7.2-7.8)

## ADULT BEHAVIORAL RISK FACTORS, 2011-2015

Table 18

<b>CHOLESTEROL</b>		<b>Mountrail 2011-2015</b>	<b>North Dakota 2011-2015</b>
<b>Never Cholesterol Test</b>	Respondents who reported never having a cholesterol test.	27.5 (20.0-35.0)	22.8 (21.8-23.8)
<b>No Cholesterol Test in Past 5 Years</b>	Respondents who reported never having a cholesterol test in the past five years.	32.8 (25.1-40.5)	27.2 (26.2-28.3)
<b>High Cholesterol</b>	Respondents who reported that they had ever been told by a doctor, nurse or other health professional that they had high cholesterol.	37.1 (28.9-45.3)	36.1 (35.1-37.1)
<b>CHRONIC LUNG DISEASE</b>			
<b>COPD</b>	Respondents who have ever been told by a doctor, nurse or other health professional ever told you that they have COPD (chronic obstructive pulmonary disease), emphysema, or chronic bronchitis.	4.9 (3.2-6.6)	4.7 (4.4-5.0)
<b>COLORECTAL CANCER</b>			
<b>No Colorectal Cancer Screening within Recommended Timeframe</b>	Respondents age 50 and older who reported not having a fecal occult blood test in the past two years.	66.8 (56.8-76.8)	40.0 (38.3-41.7)
<b>DIABETES</b>			
<b>Diabetes Diagnosis</b>	Respondents who reported ever having been told by a doctor that they had diabetes.	10.8 (7.8-13.7)	8.5 (8.2-8.9)
<b>FRUITS AND VEGETABLES</b>			
<b>Five Fruits and Vegetables</b>	Respondents who reported that they do not usually eat 5 fruits and vegetables per day.	14.2 (6.9-21.5)	13.9 (13.2-14.6)
<b>GENERAL HEALTH</b>			
<b>Fair or Poor Health</b>	Respondents who reported that their general health was fair or poor.	17.0 (12.5-21.5)	14.0 (13.5-14.6)
<b>Poor Physical Health</b>	Respondents who reported they had 8 or more days in the last 30 when their physical health was not good.	10.1 (7.2-13.0)	11.3 (10.8-11.8)
<b>Poor Mental Health</b>	Respondents who reported they had 8 or more days in the last 30 when their mental health was not good.	11.6 (7.5-15.7)	11.4 (10.9-12.0)
<b>Activity Limitation Due to Poor Health</b>	Respondents who reported they had 8 or more days in the last 30 when poor physical or mental health kept them from doing their usual activities.	18.5 (11.0-26.1)	13.6 (12.8-14.4)
<b>Any Activity Limitation</b>	Respondents who reported being limited in any way due to physical, mental or emotional problem.	30.6 (25.6-35.7)	31.3 (30.6-32.1)





## ADULT BEHAVIORAL RISK FACTORS, 2011-2015

Table 19

HEALTH CARE ACCESS		Mountrail 2011-2015	North Dakota 2011-2015
<b>Health Insurance</b>	Respondents who reported not having any form or health care coverage.	13.1 (8.8-17.4)	10.8 (10.2-11.3)
<b>Access Limited by Cost</b>	Respondents who reported needing to see a doctor during the past 12 months but could not due to cost.	9.4 (5.2-13.6)	7.8 ( 7.3-8.3)
<b>No Personal Provider</b>	Respondents who reported that they did not have one person they consider to be their personal doctor or health care provider.	37.2 (31.1-43.3)	26.7 (25.9-27.5)
HYPERTENSION			
<b>High Blood Pressure</b>	Respondents who reported ever having been told by a doctor, nurse or other health professional that they had high blood pressure.	31.1 (23.9-38.2)	29.9 (29.0-30.7)
IMMUNIZATION			
<b>Influenza Vaccine</b>	Respondents age 65 and older who reported that they did not have a flu shot in the past year.	49.0 (39.2-58.9)	40.1 (38.9-41.4)
<b>Pneumococcal Vaccine</b>	Respondents age 65 or older who reported never having had a pneumonia shot.	36.5 (27.1-45.9)	28.5 (27.3-29.7)
INJURY			
<b>Falls</b>	Respondents 45 years and older who reported that they had fallen in the past 12 months.	41.6 (28.6-54.6)	27.4 (26.2-28.7)
<b>Seatbelt Use</b>	Respondents who reported not always wearing their seatbelt.	55.1 (48.7-61.5)	61.4 (60.6-62.3)
ORAL HEALTH			
<b>Dental Visit</b>	Respondents who reported that they have not had a dental visit in the past year.	41.9 (32.7-51.0)	33.7 (32.4-35.0)
<b>Tooth Loss</b>	Respondents who reported they ever had a permanent tooth extracted.	15.5 (10.1-20.9)	14.3 (13.6-15.1)
PHYSICAL ACTIVITY			
<b>No Leisure Physical Activity</b>	Respondents who reported that they did not get the recommended amount of physical activity.	33.0 (27.4-38.7)	25.1 (24.4-25.8)
TOBACCO			
<b>Current Smoking</b>	Respondents who reported that they smoked every day or some days.	27.2 (21.3-33.1)	20.6 (19.9-21.4)
WOMEN'S HEALTH			
<b>Pap Smear</b>	Women 18 and older who reported that they have not had a pap smear in the past three years.	35.3 (18.4-52.1)	25.1 (23.1-27.1)
<b>Mammogram Age 40+</b>	Women 40 and older who reported that they have not had a mammogram in the past two years.	48.9 (31.6-66.2)	27.0 (25.4-28.6)

## CRIME

Data presented on the North Dakota Attorney General website changed from previous years. In an effort to continue to provide this data, the variables are defined as follows which differs slightly from the 2010-2013 data:

- Rape: includes statutory rape and forcible rape
- Assault: only includes aggravated assault
- Larceny: all other crimes against property

Table 20

<b>Mountrail County</b>							
	<b>2012</b>	<b>2013</b>	<b>2014</b>	<b>2015</b>	<b>2016</b>	<b>5 Year</b>	<b>5-Year Rate</b>
<b>Murder</b>	4	0	0	1	0	5	10.3
<b>Rape</b>	0	2	3	2	1	8	16.4
<b>Robbery</b>	0	1	4	2	0	7	14.4
<b>Assault</b>	13	19	18	9	7	66	135.4
<b>Violent crime</b>	17	22	25	14	8	86	176.4
<b>Burglary</b>	18	29	18	14	14	93	190.7
<b>Larceny</b>	77	89	83	82	74	405	830.7
<b>Motor vehicle theft</b>	27	47	27	24	19	144	295.4
<b>Property crime</b>	122	165	128	120	107	642	1,316.8
<b>Total</b>	139	187	153	134	115	728	1,493.2

\*In 2012, only partial year was reported for Stanley PD.

\*In 2013, crime data from New Town PD was added.

Table 21

<b>North Dakota</b>							
	<b>2012</b>	<b>2013</b>	<b>2014</b>	<b>2015</b>	<b>2016</b>	<b>5 Year</b>	<b>5-Year Rate</b>
<b>Murder</b>	20	14	19	21	17	91	2.5
<b>Rape</b>	243	237	389	428	365	1,662	44.9
<b>Robbery</b>	117	151	166	157	181	772	20.9
<b>Assault</b>	1,071	1,156	1,145	1,185	1,132	5,689	153.7
<b>Violent crime</b>	1,451	1,558	1,719	1,791	1,695	8,214	222.0
<b>Burglary</b>	2,200	2,656	2,490	3,212	3,051	13,609	367.8
<b>Larceny</b>	10,184	10,243	5,214	6,181	6,157	37,979	1,026.4
<b>Motor vehicle theft</b>	1,031	1,228	1,462	1,725	1,887	7,333	198.2
<b>Property crime</b>	13,415	14,127	9,166	11,118	11,095	47,826	1,292.5
<b>Total</b>	14,866	15,685	10,885	12,909	12,790	54,345	1,468.7

## CHILD HEALTH INDICATORS

The following information is no longer available on the website:

High school dropouts (dropouts per 1000 persons Grades 9-12)

Children Ages 0-17 Impacted by Domestic Violence (Percentage of all children ages 0-17)

Offenses Against Person—Juvenile Court Referrals (Percentage of total juvenile court referrals)

Alcohol-Related Juvenile Court Referrals (Percentage of juvenile court referrals)

Table 22

Child Indicators: Education 2016	Mountrail County		North Dakota	
Children ages 3 to 21 enrolled in special education in public schools	272	14.5%	14,426	13.2%
Four-year high school cohort graduates	69.0%		88.7%	
Average expenditure per student in public school	\$11,951		\$11,418	

Table 23

Child Indicators: Economic Health 2016	Mountrail County		North Dakota	
TANF recipients ages 0-19	25	0.9%	4,649	2.3%
SNAP recipients ages 0-18	446	16.3%	37,758	20.3%
Eligible recipients of free or reduced price lunch	909	47.3%	37,928	32.6%
Medicaid recipients ages 0-20	961	32.1%	59,156	28.0%
Median income for families with children ages 0-17	\$72,561		\$75,818	
Children ages 0 to 17 living in low-income families (<200% of poverty)	829	32.9%	50,147	30.5%

Table 24

Child Indicators: Families and Child Care 2016	Mountrail County		North Dakota	
Women in labor force, by age of children (ages 0-17)	629	71.2%	59,532	79.4%
Children ages 0-17 living in a single parent family	747	29.0%	39,192	23.4%
Children in foster care	35	1.3%	2,397	1.3%
Victims of child abuse and neglect - services required (Percent of suspected victims)	30	34.1%	1,805	27.2%
Births to mothers receiving prenatal care beginning after first trimester or not at all	57	31.5%	1,612	14.2%

Table 25

Child Indicators: Juvenile Justice 2016	Mountrail County		North Dakota	
Children ages 10-17 referred to juvenile court	12	1.1%	3,471	4.9%

\*LNE-Low Number Events