

THE GOLDEN HOUR OF RURAL TRAUMA

THE DIFFERENCE BETWEEN LIFE AND DEATH

60

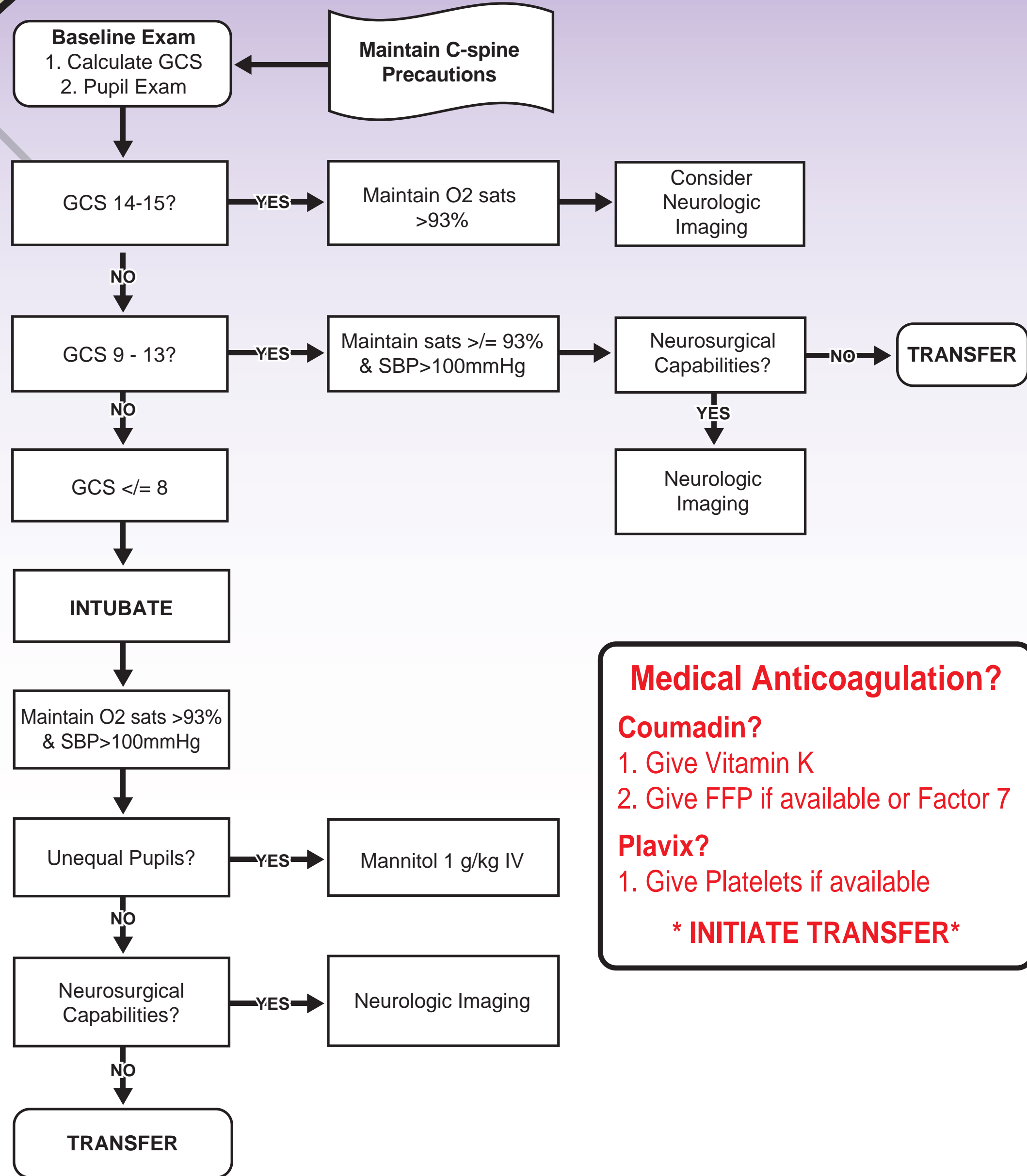
DISABILITY

AIRWAY

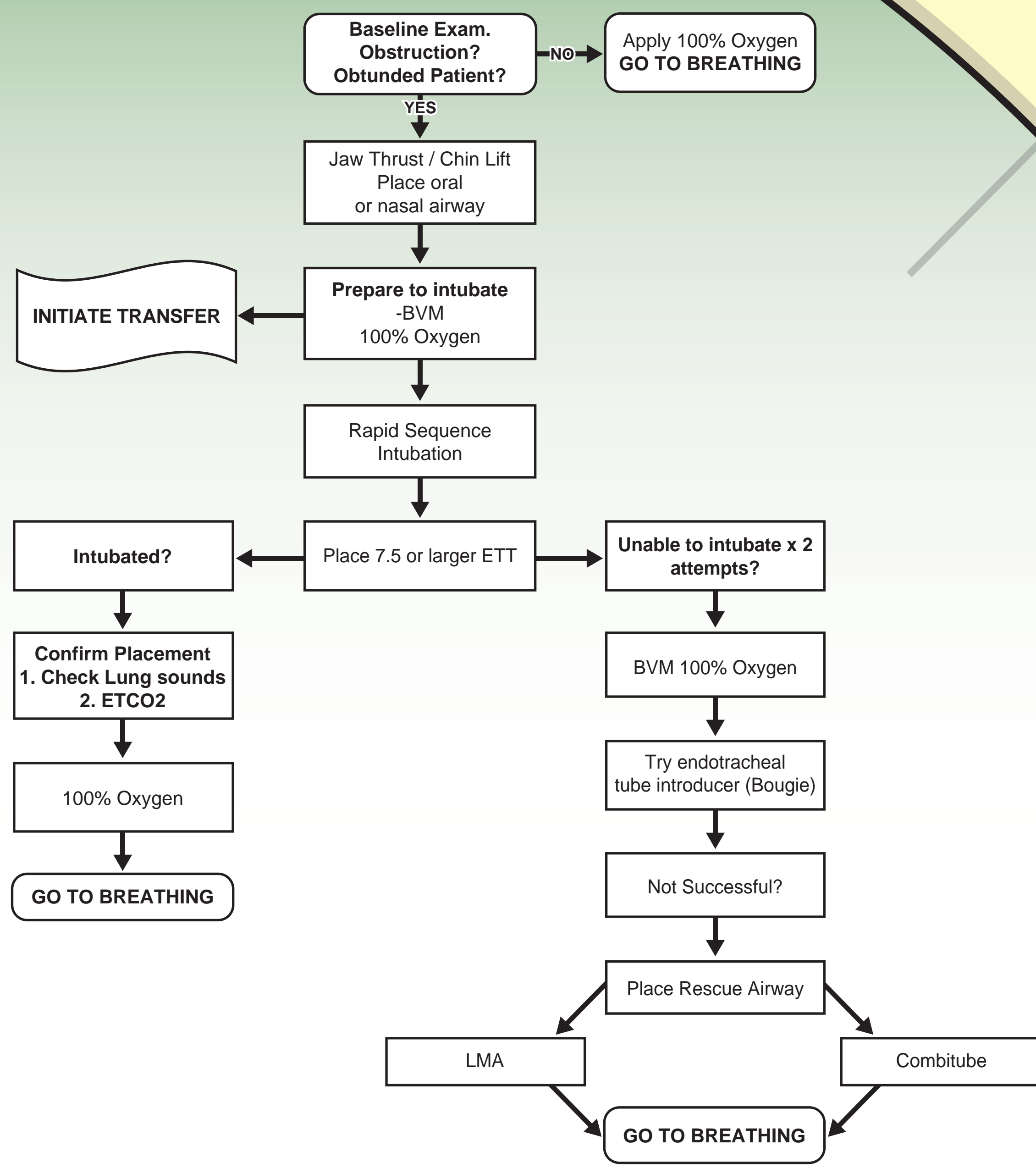
GLASGOW COMA SCORE			
Activity	Score	Infant Response	Adult Response
Eye Opening	4	Spontaneous	Spontaneous
	3	To speech or sound	To speech
	2	To painful stimuli	To pain
	1	None	None
Verbal	5	Appropriate words, sounds, and social smile	Oriented to person, place, month, year
	4	Cries but consolable	Confused
	3	Persistently irritable	Inappropriate words
	2	Restless / agitated	Incomprehensible
	1	None	None
Motor	6	Spontaneous movement	Obeys commands
	5	Localizes pain	Localizes pain
	4	Withdraws to pain	Withdraws to pain
	3	Abnormal extremity flexion	Abnormal extremity flexion
	2	Abnormal extremity extension	Abnormal extremity extension
	1	None	None

LEVEL II TRAUMA CENTER & AIR TRANSPORT CONTACTS

- Alltru Health (Grand Forks) - 701-525-2211
- MeritCare Hospital (Fargo) - 1-800-647-1225
- Innovis Health (Fargo) - 701-364-8401
- Medcenter One (Bismarck) - 701-323-6150
- St. Alexius Med. Center (Bismarck) - 701-530-7000
- Trinity Hospital (Minot) - 1-800-223-1596
- MeritCare Life Flight (Fargo) - 1-800-437-6886
- North Star Criticair (Minot) - 1-800-223-1596
- Bismarck Air Medical - 1-800-441-1310



Medical Anticoagulation?
Coumadin?
 1. Give Vitamin K
 2. Give FFP if available or Factor 7
Plavix?
 1. Give Platelets if available
*** INITIATE TRANSFER***



D

A

45

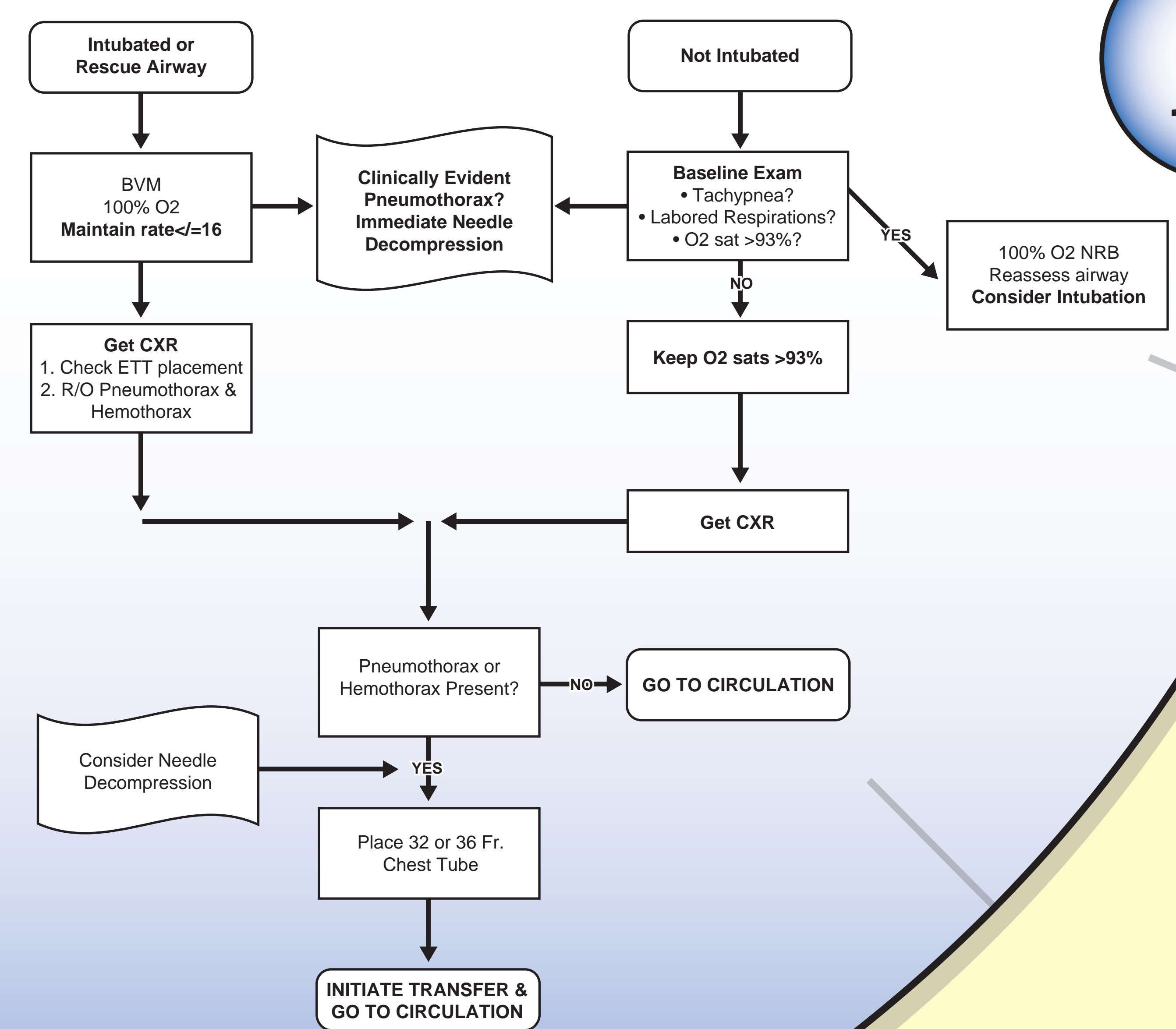
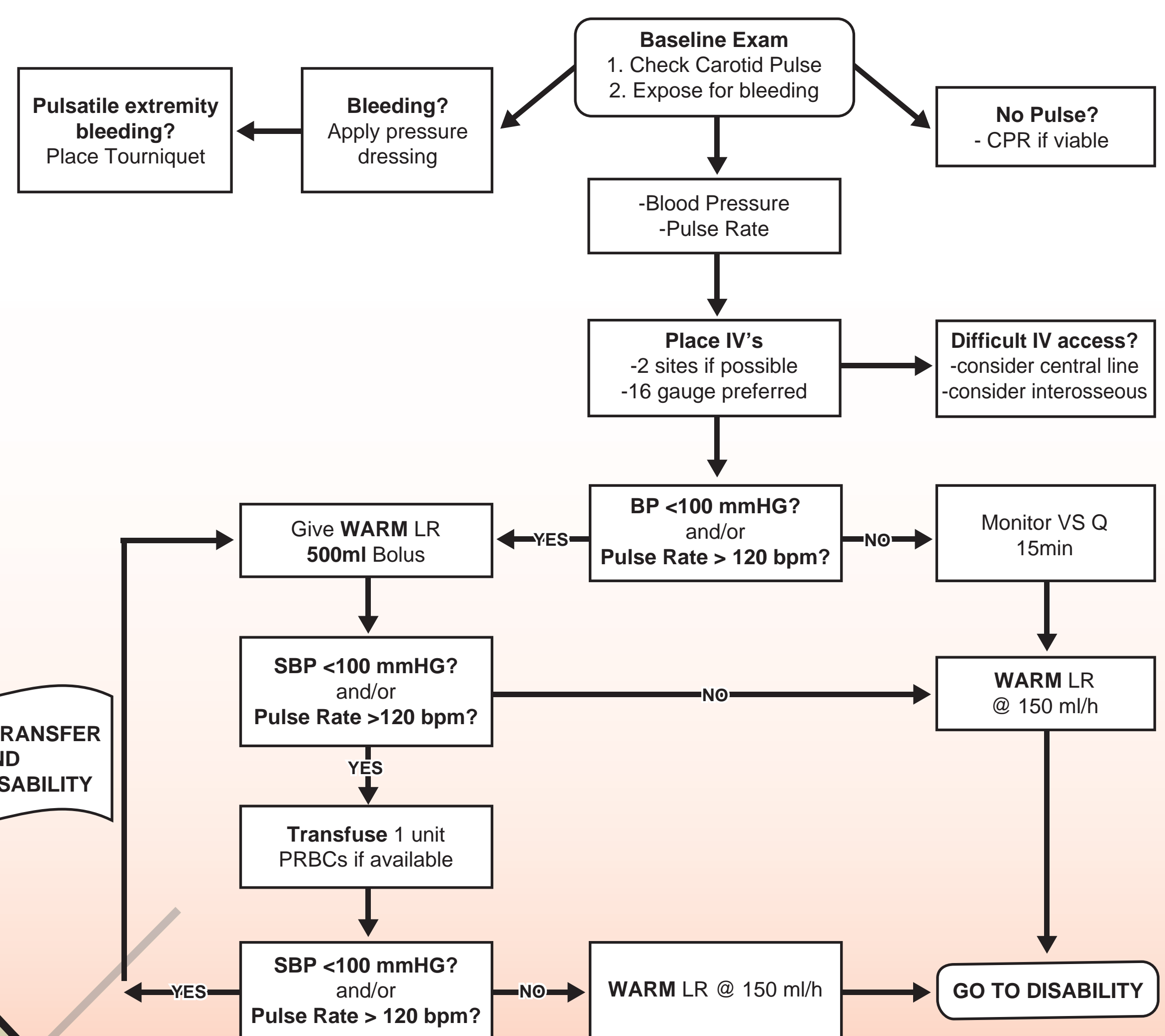
15

C

B

CIRCULATION

BREATHING



30



Dr. Steven Briggs and MeritCare Health System make no representations on the accuracy of information contained herein and accept no liability for any loss or damage arising from any content error or omission.

This original document was created January 2010 for use within the North Dakota State Trauma System by: Steven Briggs, MD; MeritCare Hospital, Fargo ND; Amy Eberle, RN; North Dakota Department of Health. © 2010 Dr. Steven Briggs and MeritCare Health System