

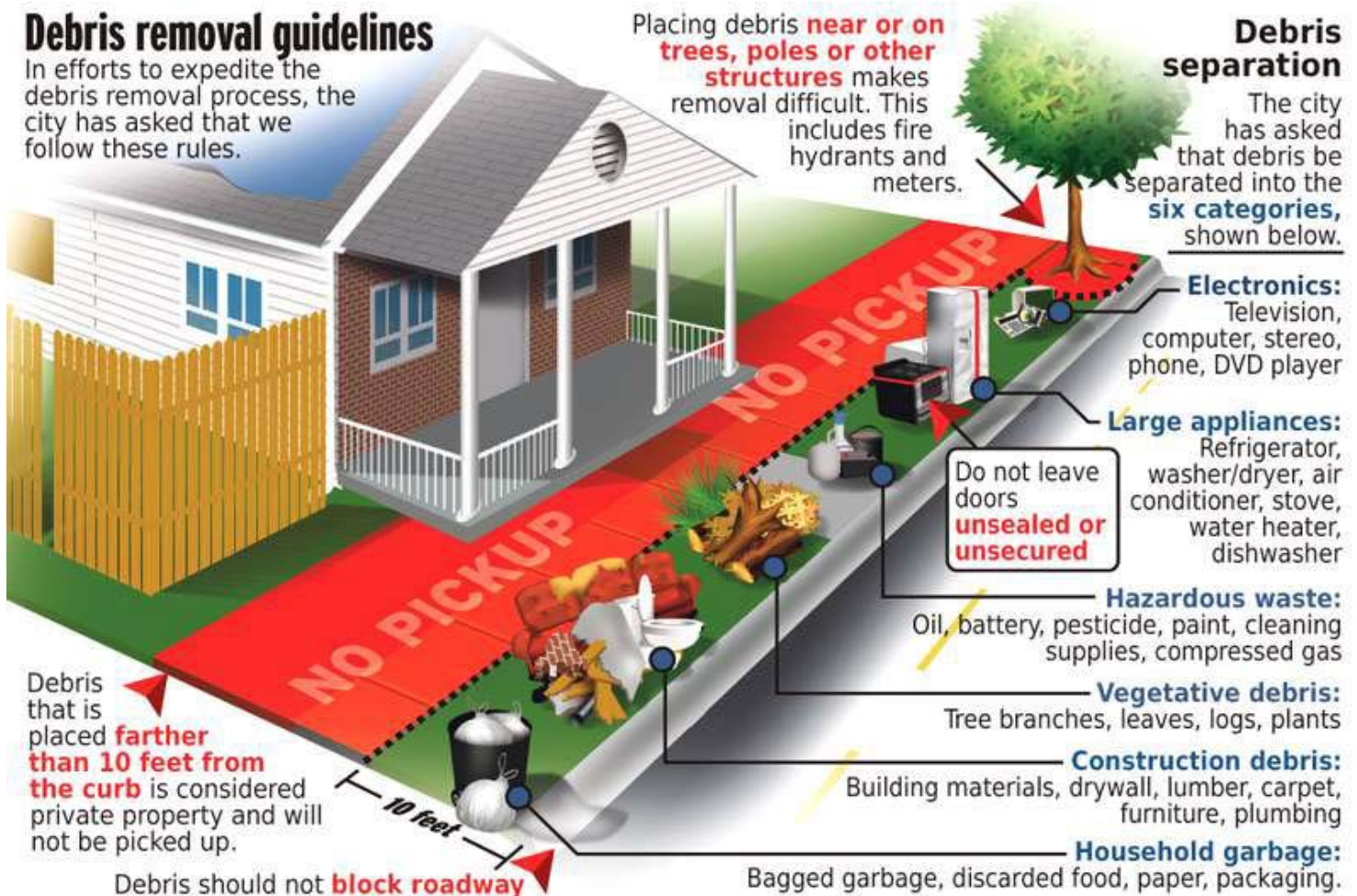
Debris removal guidelines

In efforts to expedite the debris removal process, the city has asked that we follow these rules.

Placing debris **near or on trees, poles or other structures** makes removal difficult. This includes fire hydrants and meters.

Debris separation

The city has asked that debris be separated into the **six categories**, shown below.



Reprinted with permission by the Tuscaloosa News (Anthony Bratina, artwork).

Additional guidelines on debris separation:

Electronics also may include mercury devices and fluorescent lighting equipment such as thermostats, mercury switches, fluorescent fixtures and bulbs, light ballasts and similar materials.

*Package fluorescent bulbs carefully to avoid breaking.

Large appliances also may include metal yard equipment, mowers, lawn furniture, metal bed frames, ducting, furnaces, pipes, metal toys, pots and pans, and other metal items.

*Remove food from appliances, seal food in plastic bags, and place in household garbage pile for quicker removal and to reduce odors.

***Remove or secure doors** to keep children out of large appliances.

Hazardous waste also may include bagged and labeled asbestos-containing material removed by homeowners (not by contractors or facilities), mercury thermometers, fuels, solvents, rat poison, flea powder, insecticides, weed killers, fertilizers, antifreeze, batteries, gasoline, motor oil, used motor oil, solvents, degreasers, spot removers, paint, thinners, lacquer, photography materials, rust removers, medication, aerosol cans, propane tanks, butane cylinders, oven cleaners, toilet cleaners, furniture polish, drain cleaners, silver polish, fuel oil, flammable liquids and other materials.

***Label containers and do not mix materials.**



NORTH DAKOTA
DEPARTMENT of HEALTH