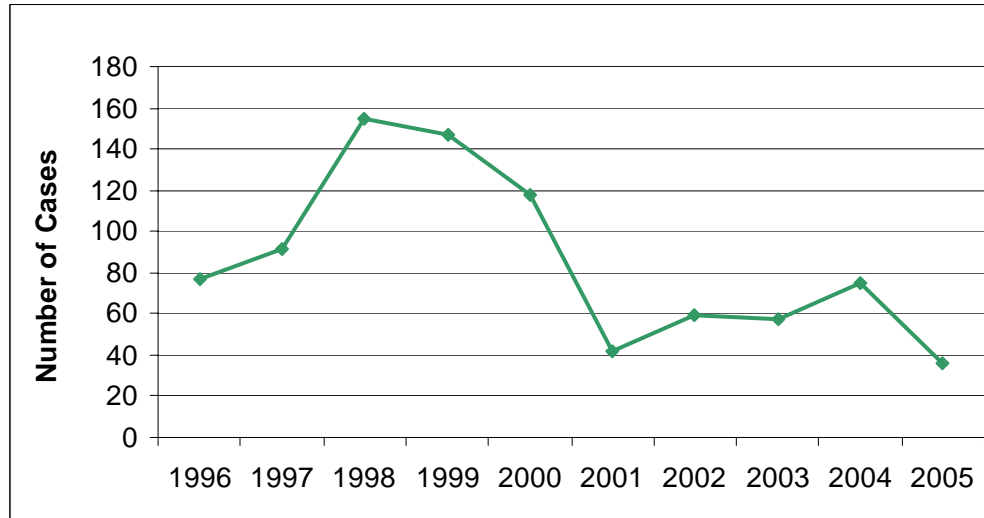


**Positive Animal Rabies Cases by Year – North Dakota, 1996-2005**



**Positive Animal Rabies Cases by Species – North Dakota, 1996-2005**

Animal	1996	1997	1998	1999	2000	2001	2002	2003	2004	2005	Total
bat	0	0	0	0	1	0	0	2	2	1	6
cat	7	3	6	9	9	3	4	5	9	6	61
cow	8	15	12	21	14	6	11	4	7	2	100
dog	2	2	6	6	8	2	2	7	3	5	43
fox	1	0	0	1	0	0	0	0	0	0	2
horse	3	4	11	7	7	3	1	1	4	0	41
muskrat	0	1	0	0	0	0	0	0	0	0	1
raccoon	0	0	2	2	0	0	1	0	1	0	6
sheep	0	1	0	0	0	0	1	0	0	0	2
skunk	56	65	116	100	77	27	39	38	49	22	589
other*	0	0	2	1	2	1	0	0	0	0	6
<b>Total</b>	<b>77</b>	<b>91</b>	<b>155</b>	<b>147</b>	<b>118</b>	<b>42</b>	<b>59</b>	<b>57</b>	<b>75</b>	<b>36</b>	<b>857</b>

\*Includes: badger, beaver, buffalo, deer, donkey, elk, ferret, goat, gopher, hamster, llama, lynx, mink, mole, moose, mouse, owl, pig, porcupine, rabbit, rat, river otter, shrew, squirrel, weasel, and woodchuck.