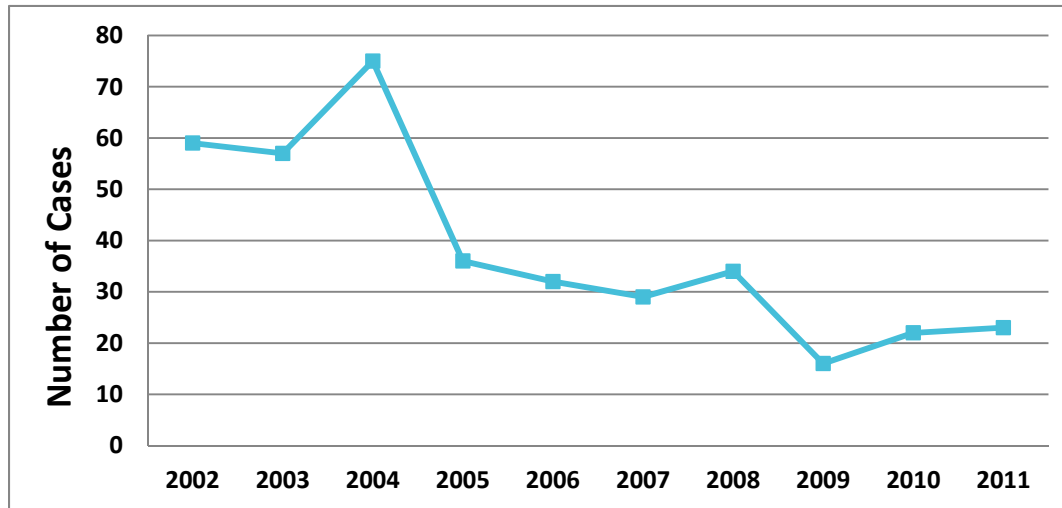


Positive Animal Rabies Cases by Year - North Dakota, 2002 - 2011



Positive Animal Rabies Cases by Species - North Dakota, 2002 - 2011

Animal	2002	2003	2004	2005	2006	2007	2008	2009	2010	2011	Total
Bat	0	2	2	1	1	2	1	1	2	1	13
Cat	4	5	9	6	5	4	5	1	4	1	44
Cow	11	4	7	2	5	2	4	1	2	2	57
Dog	2	7	3	5	4	7	4	1	2	2	37
Fox	0	0	0	0	0	0	0	0	0	0	0
Horse	1	1	4	0	0	1	1	0	0	0	37
Muskrat	0	0	0	0	0	0	0	0	0	0	0
Raccoon	1	0	1	0	0	1	1	0	0	0	4
Sheep	1	0	0	0	0	0	0	0	0	0	4
Skunk	39	38	49	22	17	11	18	12	11	17	234
Other*	0	0	0	0	0	1	0	0	1	0	2
Total	59	57	75	36	32	29	34	16	22	23	383

*Includes: badger, beaver, buffalo, deer, donkey, elk, ferret, goat, gopher, hamster, llama, lynx, mink, mole, moose, mouse, owl, pig, porcupine, rabbit, rat, river otter, shrew, squirrel, weasel and woodchuck.