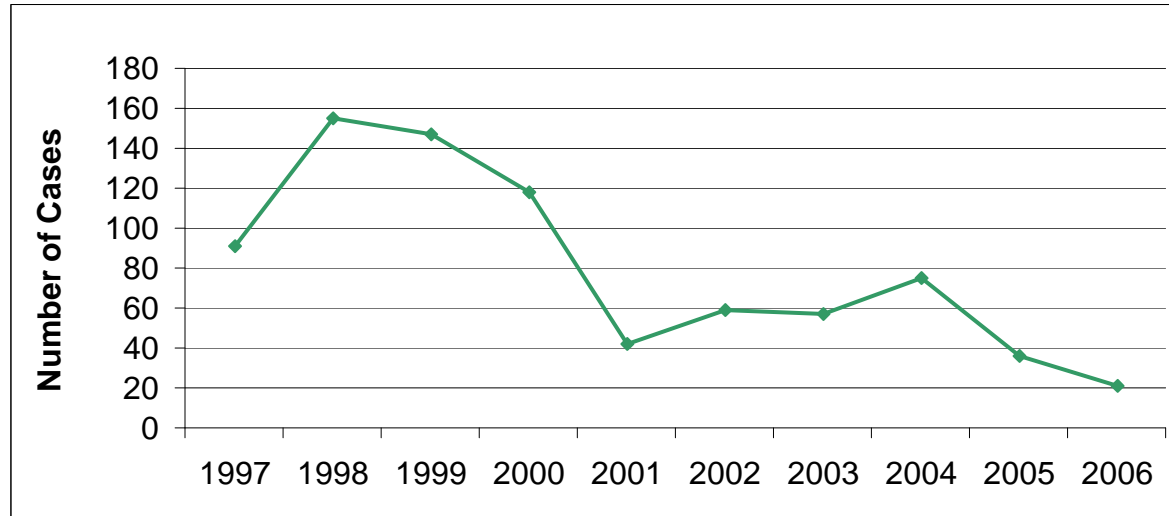


Positive Animal Rabies Cases by Year – North Dakota, 1997-2006



Positive Animal Rabies Cases by Species – North Dakota, 1997-2006

| Animal | 1997 | 1998 | 1999 | 2000 | 2001 | 2002 | 2003 | 2004 | 2005 | 2006 | Total |
|--------------|-----------|------------|------------|------------|-----------|-----------|-----------|-----------|-----------|-----------|------------|
| bat | 0 | 0 | 0 | 1 | 0 | 0 | 2 | 2 | 1 | 1 | 7 |
| cat | 3 | 6 | 9 | 9 | 3 | 4 | 5 | 9 | 6 | 5 | 59 |
| cow | 15 | 12 | 21 | 14 | 6 | 11 | 4 | 7 | 2 | 5 | 97 |
| dog | 2 | 6 | 6 | 8 | 2 | 2 | 7 | 3 | 5 | 4 | 45 |
| fox | 0 | 0 | 1 | 0 | 0 | 0 | 0 | 0 | 0 | 0 | 1 |
| horse | 4 | 11 | 7 | 7 | 3 | 1 | 1 | 4 | 0 | 0 | 38 |
| muskrat | 1 | 0 | 0 | 0 | 0 | 0 | 0 | 0 | 0 | 0 | 1 |
| raccoon | 0 | 2 | 2 | 0 | 0 | 1 | 0 | 1 | 0 | 0 | 6 |
| sheep | 1 | 0 | 0 | 0 | 0 | 1 | 0 | 0 | 0 | 0 | 2 |
| skunk | 65 | 116 | 100 | 77 | 27 | 39 | 38 | 49 | 22 | 17 | 550 |
| other* | 0 | 2 | 1 | 2 | 1 | 0 | 0 | 0 | 0 | 0 | 6 |
| Total | 91 | 155 | 147 | 118 | 42 | 59 | 57 | 75 | 36 | 32 | 812 |

*Includes: badger, beaver, buffalo, deer, donkey, elk, ferret, goat, gopher, hamster, llama, lynx, mink, mole, moose, mouse, owl, pig, porcupine, rabbit, rat, river otter, shrew, squirrel, weasel, and woodchuck.