

Sargent County District Health Unit

Sargent County Community Health Profile

Authors:

Tracy K. Miller, PhD, MPH
State Epidemiologist

Kodi Pinks, MPH
Epidemiologist

June 2018



TABLE OF CONTENTS

Data Sources	ii
Photograph Credits	ii
POPULATION DATA	
Table 1: Population by Age Group	1
Table 2: Female Population and Percentage Female by Age	1
Table 3: Race	1
Table 4: Household Populations	2
Table 5: Population Change	2
Table 6: Marital Status of Persons Age 15 and Older	2
Table 7: Educational Attainment Among Persons 25+	2
Table 8: Persons with Disability	3
Table 9: Income and Poverty Status by Age Group	3
Table 10: Family Poverty and Childhood and Elderly Poverty	3
Table 11: Age of Housing	3
VITAL STATISTICS DATA	
Birth and Deaths Definitions	4
Table 12: Births	5
Table 13: Child Deaths	5
Table 14: Deaths and Age Adjusted Death Rate by Cause	5
Table 15: Leading Causes of Death by Age Group for County	6
Table 16: Leading Causes of Death by Age Group for North Dakota	6
ADULT BEHAVIORAL RISK FACTORS	
Table 17:	
• Adult Behavioral Risk Factors Definition	7
• Alcohol	8
• Arthritis	8
• Asthma	8
• Body Weight	8
• Cancer	8
• Cardiovascular	8
Table 18:	
• Cholesterol	9
• Chronic Lung Disease	9
• Colorectal Cancer	9
• Diabetes	9
• Fruits and Vegetables	9
• General Health	9
Table 19:	
• Health Care Access	10
• Hypertension	10
• Immunization	10
• Injury	10
• Oral Health	10
• Physical Activity	10
• Tobacco	10
• Women’s Health	10
CRIME	
Table 20: County	11
Table 21: North Dakota	11
CHILD RISK	
Table 22: Child Indicators—Education	12
Table 23: Child Indicators—Economic Health	12
Table 24: Child Indicators—Families and Child Care	12
Table 25: Child Indicators—Juvenile Justice	12

Data Sources

The Demographic Section of this report comes from the US Census Bureau (www.census.gov). Most tables are derived either from the census estimates for 2015 or from the Community Population Survey aggregated over a several year period. The table header describes the specific years from which the data is derived. The tables present the number of persons and percentages which in almost all circumstances represent the category specific percentage of all persons referenced by the table (e.g., percentage of persons age 15 and older who are married). Age specific poverty rates represent the percentage of each age group in poverty (e.g., percentage of children under five years in poverty).

The **Vital Statistics** section of this report comes from the birth and death records collected by the North Dakota Department of Health Vital Records. This data is aggregated over a five year period. All births and deaths represent the county of residence not the county of occurrence. In order to maintain a person's confidentiality, the number of events is blocked if fewer than six.

The **Adult Behavioral Risk Factor** section of this report is derived from the North Dakota Department of Health's Behavioral Risk Factor Surveillance Survey. The aggregated data (the number of years specified in the table) is continuously collected by telephone survey from persons 18 years and older residing in North Dakota. All data is self-reported data.

Data presented in the **Crime** section of this report is collected from the North Dakota Attorney General website located at: www.ag.nd.gov/Reports/BCIReports/CrimeHomicide/CrimeHomicide.htm.

Data presented in the **Child Health Indicators** section of this report is collected from the Kids Count Data Center website located at: www.datacenter.kidscount.org.

Photography Credits

Permission to use cover photos granted by:

- Scott Thomas Photography - Theodore Roosevelt National Park in Winter
www.sthomasphotos.com/
- Jerry Blank – Lightening Storm north of Williston and Sunset over Little Missouri river
www.jerryblank.us/gallery-nd.html
- ND Department of Commerce – Oil wells
www.commerce.nd.gov/news/MediaGallery/
- ND Tourism Division – All other photos
www.ndtourism.com/

POPULATION DATA

Table 1

Population by Age Group, 2016 Census Estimates				
Age Group	Sargent County		North Dakota	
	Number	Percent	Number	Percent
0-9	443	11.4%	105,035	13.9%
10-19	447	11.5%	93,820	12.4%
20-29	430	11.1%	127,579	16.8%
30-39	424	10.9%	101,492	13.4%
40-49	411	10.6%	79,632	10.5%
50-59	607	15.6%	95,466	12.6%
60-69	574	14.8%	80,159	10.6%
70-79	341	8.8%	41,996	5.5%
80+	213	5.5%	32,773	4.3%
Total	3,890	100.0%	757,952	100.0%
0-17	808	20.8%	176,311	23.3%
65+	836	21.5%	109,999	14.5%

Table 2



Female Population and Percentage Female by Age, 2016 Census Estimates				
Age Group	Sargent County		North Dakota	
	Number	Percent	Number	Percent
0-9	210	11.5%	51,145	13.9%
10-19	216	11.8%	45,349	12.3%
20-29	186	10.2%	58,619	15.9%
30-39	186	10.2%	47,001	12.7%
40-49	198	10.9%	37,992	10.3%
50-59	274	15.0%	46,809	12.7%
60-69	252	13.8%	39,397	10.7%
70-79	169	9.3%	22,236	6.0%
80+	133	7.3%	20,430	5.5%
Total	1,824	100.0%	368,978	100.0%
0-17	382	20.9%	85,921	23.3%
65+	429	23.5%	60,025	16.3%

Table 3

Race, Five Year Estimates (2012-2016)				
Race	Sargent County		North Dakota	
	Number	Percentage	Number	Percentage
Total	3,889	100.0%	736,162	100%
White	3,715	95.5%	649,730	88.3%
Black	65	1.7%	14,761	2.0%
American Indian	27	0.7%	38,369	5.2%
Asian	9	0.2%	9,296	1.3%
Pacific Islander	0	0.0%	336	0.0%
Other	38	1.0%	5,691	0.8%
Multi-race	35	0.9%	17,979	2.4%

POPULATION DATA

Table 4

Household Populations, 2011 ACS Five Year Estimates				
	Sargent County		North Dakota	
	Number	Percent	Number	Percent
Total	3,909	100.0%	666,783	100.0%
In Family Households	3,211	82.1%	509,097	76.4%
In Non-Family Households	667	17.1%	132,651	19.9%
Total In Households	3,878	99.2%	641,748	96.2%
Institutionalized*	37	0.9%	9,675	1.5%
Non-institutionalized*	-6	-0.2%	15,360	2.3%
Total in Group Quarters	31	0.8%	25,035	3.8%

*2011 is the most recent data

Table 5

Population Change 2000-2015				
Census	Sargent County	5 Year Change (%)	North Dakota	5 Year Change (%)
2000	4,366		642,200	
2005	4,117	-5.7%	635,365	-1.1%
2010	3,829	-7.0%	672,591	5.9%
2015	3,866	1.0%	754,859	12.2%

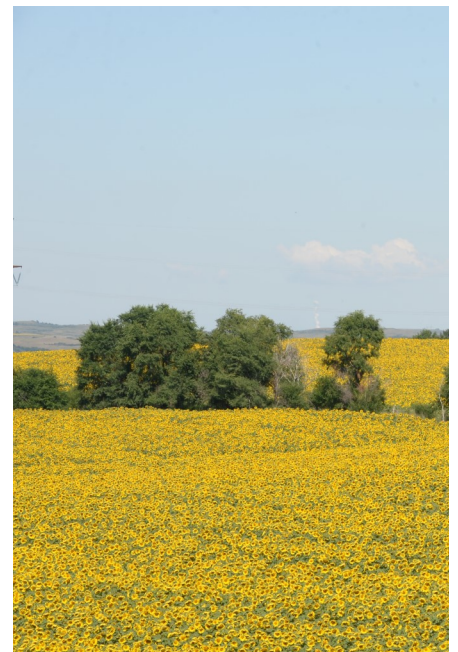


Table 6

Marital Status of Persons Age 15 and Older, 2016 ACS Five Year Estimates				
Marital Status	Sargent County		North Dakota	
	Number	Percent	Number	Percent
Total Age 15+	3,251	100.0%	594,068	100.0%
Never Married	731	22.5%	189,508	31.9%
Now Married	1,938	59.6%	308,915	52.0%
Separated	13	0.4%	5,347	0.9%
Widowed	192	5.9%	33,862	5.7%
Divorced	374	11.5%	56,436	9.5%

Table 7

Educational Attainment Among Persons 25+, 2016 ACS Five Year Estimates				
Education	Sargent County		North Dakota	
	Number	Percent	Number	Percent
Total	2,780	100.0%	477,607	100.0%
Less than 9th Grade	117	4.2%	16,846	3.5%
Some High School	113	4.1%	21,188	4.4%
High school or GRE	870	41.9%	131,086	27.4%
Some College/Assoc. Degree	1,153	41.4%	173,933	36.4%
Bachelor's Degree	448	16.1%	97,890	20.5%
Post Graduate Degree	79	2.8%	36,664	7.7%

POPULATION DATA

Table 8

Persons with Disability, 2016 ACS Five Year Estimates				
Group	Sargent County		North Dakota	
	Number	Percent	Number	Percent
Total	3,851	100.0%	720,312	100.0%
Any Disability	455	11.8%	77,651	10.8%
No Disability	3,396	88.2%	642,661	89.2%
Self Care Disability	52	1.4%	11,469	1.7%
0-17 with any disability	27	5.9%	5,618	7.2%
18-64 with any disability	189	41.5%	38,310	49.3%
65+ with any disability	239	52.5%	33,723	43.4%

Table 9

Income and Poverty Status by Age Group, 2016 ACS Five Year Estimates				
	Sargent County		North Dakota	
	Number	Percent	Number	Percent
Median Household Income		\$57,472		\$59,114
Per Capita Income		\$33,072		\$33,107
	Number	Percent	Number	Percent
Below Poverty Level	221	5.8%	79,314	11.2%
Under 5 Years	17	7.7%	7,618	9.6%
5 to 11 Years	6	2.7%	8,423	10.6%
12 to 17 Years	14	6.3%	5,349	6.7%
18 to 64 Years	133	60.2%	48,969	61.7%
65 to 74 Years	23	10.4%	3,532	4.5%
75 Years and Over	28	12.7%	5,423	6.8%

Table 10

Family Poverty and Childhood and Elderly Poverty, 2016 ACS Five Year Estimates				
	Sargent County		North Dakota	
	Number	Percent	Number	Percent
Total Families	1,093	100.0%	183,466	100.00%
Families in Poverty	35	3.2%	12,659	6.90%
Families with Own Children	398	36.4%	84,714	46.17%
Families with Own Children in Poverty	25	2.3%	9,912	5.40%
Families with Own Children and Female Parent Only	76	7.0%	23,485	27.72%
Families with Own Children and Female Parent Only in Poverty	21	1.9%	8,408	4.58%
Total Known Children in Poverty	37	4.6%	21,390	12.1%
Total Known Age 65+ in Poverty	51	6.1%	8,955	8.1%

* Percent family poverty is percent of total families

Table 11

Age of Housing, 2016 ACS Five Year Estimates				
	Sargent County		North Dakota	
	Number	Percent	Number	Percent
Housing Units: Total	2,058	100.0%	350,134	100.0%
1980 and Later	661	32.1%	149,657	42.7%
1970 to 1979	346	16.8%	67,069	19.2%
Prior to 1970	1,051	51.1%	133,408	38.1%

Vital Statistics Data

BIRTHS AND DEATHS DEFINITIONS

Formulas for calculating rates and ratios are as follows:

Birth Rate = Resident live births divided by the total resident population x 1000.

Pregnancies = Live births + Fetal deaths + Induced termination of pregnancy.

Pregnancy Rate = Total pregnancies divided by the total resident population x 1000.

Fertility Rate = Resident live births divided by female population (age 15-44) x 1000.

Teenage Birth Rate = Teenage births (age <20) divided by female teen population x 1000.

Teenage Pregnancy Rate = Teenage pregnancies (age <20) divided by female teen population x 1000.

Out of Wedlock (OOW) Live Birth Ratio = Resident OOW live births divided by total resident live births x 1000.

Out of Wedlock Pregnancy Ratio = Resident OOW pregnancies divided by total pregnancies x 1000.

Low Weight Ratio = Low weight births (birth weight < 2500 grams) divided by total resident live births x 1000.

Infant Death Ratio = Number of infant deaths divided by the total resident live births x 1000.

Childhood & Adolescent Deaths = Deaths to individuals 1 - 19 years of age.

Childhood and Adolescent Death Rate = Number of resident deaths (age 1 - 19) divided by population (age 1 - 19) x 100,000.

Crude Death Rate = Death events divided by population x 100,000.

Age-Adjusted Death Rate = Death events with age specific adjustments x 100,000 population.



Vital Statistics Data

BIRTHS AND DEATHS

Table 12

	Sargent County		North Dakota	
	Number	Rate or Ratio	Number	Rate or Ratio
Live Births and Rate	209	10.9	54,644	16.3
Pregnancies and Rate	219	11.4	59,226	17.6
Fertility Rate	78.1		84.6	
Teen Births and Rate	NR	5.4	2,715	23.8
Teen Pregnancies and Rate	NR	7.2	3,263	28.6
Out of Wedlock Births and Ratio	47	224.9	17,518	320.6
Out of Wedlock Pregnancies and Ratio	52	237.4	21,289	359.5
Low Birth Weight Birth and Ratio	9	43.1	3,448	63.1

Table 13

	Sargent County		North Dakota	
	Number	Rate or Ratio	Number	Rate or Ratio
Infant Deaths and Ratio	0	0.0	299	5.5
Child and Adolescent Deaths and Rate	NR	22.1	235	28.8
Total Deaths and Crude Rate	179	935.0	30,152	896.6

Table 14

	Deaths and Age Adjusted Death Rate by Cause, 2012-2016			
	Sargent County		North Dakota	
	Number	Adj. Rate	Number	Adj. Rate
All Causes	179	494.4	30,303	674.8
Heart Disease	37	99.5	6,571	140.3
Cancer	49	118.5	6,215	142.1
Stroke	8	22.3	1,546	31.9
Alzheimer's Disease	NR	13.0	2,130	41.2
COPD	18	52.4	1,623	35.2
Unintentional Injury	6	28.7	1,764	45.9
Diabetes Mellitus	8	20.3	908	20.6
Pneumonia and Influenza	NR	3.2	791	16.5
Cirrhosis	NR	7.2	429	11.6
Suicide	NR	14.6	630	18.4
Hypertension	7	22.0	467	9.5

NR-Not Reportable

Vital Statistics Data

BIRTHS AND DEATHS

Table 15

Leading Causes of Death by Age Group for Sargent County, 2012-2016			
Age	1	2	3
0-4	Unintentional Injury*	No Reported Deaths	
5-14	No Reported Deaths		
15-24	No Reported Deaths		
25-34	Unintentional Injury*	Heart*	Nephritis*
35-44	Cancer*	COPD*	No Reported Deaths
45-54	Cancer*	Heart*	Unintentional Injury*
55-64	Cancer 12	Heart*	COPD*
65-74	Cancer 12	COPD 6	Heart*
75-84	Cancer 14	Heart 8	COPD*
85+	Heart 15	Cancer 9	Cerebrovascular Disease 6

*Numbers less than six are not listed.

Table 16

Leading Causes of Death by Age Group for North Dakota, 2012-2016			
Age	1	2	3
0-4	Congenital Anomaly 53	Prematurity 50	Sudden Infant Death 45
5-14	Unintentional Injury 21	Suicide 6	Homicide*
15-24	Unintentional Injury 191	Suicide 127	Cancer 16
25-34	Unintentional Injury 211	Suicide 125	Heart 50
35-44	Unintentional Injury 184	Suicide 107	Heart 99
45-54	Cancer 350	Heart 282	Unintentional Injury 210
55-64	Cancer 1,094	Heart 646	Unintentional Injury 192
65-74	Cancer 1,563	Heart 902	COPD 348
75-84	Cancer 1,793	Heart 1,441	COPD 565
85+	Heart 3,141	Alzheimer's Disease 1,566	Cancer 1,261

*Numbers less than six are not listed.

ADULT BEHAVIORAL RISK FACTORS DEFINITION

The following three pages represent data received from the Adult Behavioral Risk Factor Surveillance Survey. Numbers given are point estimate percentages followed by 95% confidence intervals. Statistical significance can be determined by comparing confidence intervals between two geographic areas. To be statistically significant, confidence may not overlap. For example the confidence intervals 9.3 (8.3-10.2) and 10.8 (10.0-11.6) overlap (see picture below) so the difference between the two numbers is not statistically significant. That means that substantial uncertainty remains whether the apparent difference is due to chance alone (due to sampling variation) rather than representing a true difference in the prevalence of the condition in the two populations. The less they overlap, the more likely it is that the point estimates represent truly different prevalence's in the two populations.



ADULT BEHAVIORAL RISK FACTORS, 2011-2015

Table 17

ALCOHOL		Sargent 2011-2015	North Dakota 2011-2015
Binge Drinking	Respondents who reported binge drinking (5 drinks for men, 4 drinks for women) one or more times in the past 30 days.	25.5 (18.3-32.8)	24.1 (23.3-24.9)
Heavy Drinking	Respondents who reported heavy drinking (more than 2 drinks per day for men, more than 1 drink per day for women) during the past 30 days.	10.3 (5.2-15.3)	6.7 (6.3-7.2)
Drunk Driving	Respondents who reported driving when they had too much to drink one or more times during the past 30 days.	1.6 (0.0-4.0)	3.4 (2.8-3.9)
ARTHRITIS			
Activity Limitation Due to Arthritis	Respondents who reported being limited in any usual activities because of arthritis or joint symptoms.	51.5 (33.9-69.2)	47.0 (45.2-48.9)
Doctor Diagnosed Arthritis	Respondents who reported ever have been told by a doctor or other health professional that they had some form of arthritis.	30.2 (22.9-37.4)	24.6 (24.0-25.2)
ASTHMA			
Ever Asthma	Respondents who reported ever having been told by a doctor, nurse or other health professional that they had asthma.	9.2 (4.4-14.0)	11.9 (11.3-12.4)
Current Asthma	Respondents who reported ever having been told by a doctor, nurse or other health professional that they had asthma and who still have asthma.	7.7 (3.1-12.2)	8.4 (7.9-8.9)
BODY WEIGHT			
Overweight, Not Obese	Respondents with a body mass index greater than or equal to 25 but less than 30 (overweight).	36.7 (27.9-45.4)	36.5 (35.7-37.3)
Obese	Respondents with a body mass index greater than or equal to 30 (obese).	37.6 (29.2-46.1)	30.3 (29.6-31.1)
Overweight or Obese	Respondents with a body mass index greater than or equal to 25 (overweight or obese).	74.3 (66.6-82.0)	66.8 (66.0-67.7)
CANCER			
Any Cancer	Respondents who reported ever having been told by a doctor, nurse or other health professional that they had cancer (excluding skin cancer).	11.2 (6.4-15.9)	6.4 (6.1-6.7)
CARDIOVASCULAR			
Heart Attack	Respondents who reported ever having been told by a doctor, nurse or other health care professional that they had a heart attack.	4.9 (2.2-7.7)	4.3 (4.0-4.5)
Angina	Respondents who reported ever having been told by a doctor, nurse or other health care professional that they had angina.	2.2 (0.6-3.8)	4.0 (3.7-4.2)
Stroke	Respondents who reported ever having been told by a doctor, nurse or other health care professional that they had a stroke.	3.1 (1.2-5.0)	2.4 (2.2-2.6)
Cardiovascular Disease	Respondents who reported ever having been told by a doctor, nurse or other health care professional that they had any of the following: heart attack, angina or stroke.	7.3 (4.1-10.5)	7.5 (7.2-7.8)

ADULT BEHAVIORAL RISK FACTORS, 2011-2015

Table 18

CHOLESTEROL		Sargent 2011-2015	North Dakota 2011-2015
Never Cholesterol Test	Respondents who reported never having a cholesterol test.	15.1 (6.8-23.4)	22.8 (21.8-23.8)
No Cholesterol Test in Past 5 Years	Respondents who reported never having a cholesterol test in the past five years.	19.6 (10.9-28.4)	27.2 (26.2-28.3)
High Cholesterol	Respondents who reported that they had ever been told by a doctor, nurse or other health professional that they had high cholesterol.	43.5 (33.4-53.5)	36.1 (35.1-37.1)
CHRONIC LUNG DISEASE			
COPD	Respondents who have ever been told by a doctor, nurse or other health professional ever told you that they have COPD (chronic obstructive pulmonary disease), emphysema, or chronic bronchitis.	5.7 (2.9-8.5)	4.7 (4.4-5.0)
COLORECTAL CANCER			
No Colorectal Cancer Screening within Recommended Timeframe	Respondents age 50 and older who reported not having a fecal occult blood test in the past two years.	40.9 (22.1-59.7)	40.0 (38.3-41.7)
DIABETES			
Diabetes Diagnosis	Respondents who reported ever having been told by a doctor that they had diabetes.	6.9 (3.6-10.1)	8.5 (8.2-8.9)
FRUITS AND VEGETABLES			
Five Fruits and Vegetables	Respondents who reported that they do not usually eat 5 fruits and vegetables per day.	9.7 (4.0-15.4)	13.9 (13.2-14.6)
GENERAL HEALTH			
Fair or Poor Health	Respondents who reported that their general health was fair or poor.	8.1 (4.6-11.6)	14.0 (13.5-14.6)
Poor Physical Health	Respondents who reported they had 8 or more days in the last 30 when their physical health was not good.	7.4 (3.7-11.0)	11.3 (10.8-11.8)
Poor Mental Health	Respondents who reported they had 8 or more days in the last 30 when their mental health was not good.	10.9 (4.1-17.8)	11.4 (10.9-12.0)
Activity Limitation Due to Poor Health	Respondents who reported they had 8 or more days in the last 30 when poor physical or mental health kept them from doing their usual activities.	7.3 (2.3-12.4)	13.6 (12.8-14.4)
Any Activity Limitation	Respondents who reported being limited in any way due to physical, mental or emotional problem.	31.8 (23.7-40.0)	31.3 (30.6-32.1)



ADULT BEHAVIORAL RISK FACTORS, 2011-2015

Table 19

HEALTH CARE ACCESS		Sargent 2011-2015	North Dakota 2011-2015
Health Insurance	Respondents who reported not having any form or health care coverage.	5.8 (2.1-9.5)	10.8 (10.2-11.3)
Access Limited by Cost	Respondents who reported needing to see a doctor during the past 12 months but could not due to cost.	2.7 (0.5-4.9)	7.8 (7.3-8.3)
No Personal Provider	Respondents who reported that they did not have one person they consider to be their personal doctor or health care provider.	21.6 (13.8-29.4)	26.7 (25.9-27.5)
HYPERTENSION			
High Blood Pressure	Respondents who reported ever having been told by a doctor, nurse or other health professional that they had high blood pressure.	35.1 (26.3-43.8)	29.9 (29.0-30.7)
IMMUNIZATION			
Influenza Vaccine	Respondents age 65 and older who reported that they did not have a flu shot in the past year.	23.6 (12.0-35.2)	40.1 (38.9-41.4)
Pneumococcal Vaccine	Respondents age 65 or older who reported never having had a pneumonia shot.	21.1 (9.9-32.3)	28.5 (27.3-29.7)
INJURY			
Falls	Respondents 45 years and older who reported that they had fallen in the past 12 months.	31.5 (16.3-46.8)	27.4 (26.2-28.7)
Seatbelt Use	Respondents who reported not always wearing their seatbelt.	53.0 (43.7-62.2)	61.4 (60.6-62.3)
ORAL HEALTH			
Dental Visit	Respondents who reported that they have not had a dental visit in the past year.	27.2 (13.4-40.9)	33.7 (32.4-35.0)
Tooth Loss	Respondents who reported they ever had a permanent tooth extracted.	8.5 (2.3-14.8)	14.3 (13.6-15.1)
PHYSICAL ACTIVITY			
No Leisure Physical Activity	Respondents who reported that they did not get the recommended amount of physical activity.	30.5 (23.1-38.0)	25.1 (24.4-25.8)
TOBACCO			
Current Smoking	Respondents who reported that they smoked every day or some days.	16.0 (9.2-22.8)	20.6 (19.9-21.4)
WOMEN'S HEALTH			
Pap Smear	Women 18 and older who reported that they have not had a pap smear in the past three years.	19.8 (0.0-41.9)	25.1 (23.1-27.1)
Mammogram Age 40+	Women 40 and older who reported that they have not had a mammogram in the past two years.	17.8 (4.5-31.1)	27.0 (25.4-28.6)

CRIME

Data presented on the North Dakota Attorney General website changed from previous years. In an effort to continue to provide this data, the variables are defined as follows which differs slightly from the 2010-2013 data:

- Rape: includes statutory rape and forcible rape
- Assault: only includes aggravated assault
- Larceny: all other property crimes

Table 20

Sargent County							
	2012	2013	2014	2015	2016	5 Year	5-Year Rate
Murder	0	0	0	0	0	0	0.0
Rape	0	0	0	3	1	4	20.4
Robbery	0	0	0	0	0	0	0.0
Assault	0	0	2	1	4	7	35.7
Violent crime	0	0	2	4	5	11	56.1
Burglary	8	4	4	8	2	26	132.7
Larceny	13	11	7	8	6	45	229.6
Motor vehicle theft	0	1	3	5	3	12	61.2
Property crime	21	16	14	21	11	83	423.5
Total	21	16	16	25	16	94	479.6

Table 21

North Dakota							
	2012	2013	2014	2015	2016	5 Year	5-Year Rate
Murder	20	14	19	21	17	91	2.5
Rape	243	237	389	428	365	1,662	44.9
Robbery	117	151	166	157	181	772	20.9
Assault	1,071	1,156	1,145	1,185	1,132	5,689	153.7
Violent crime	1,451	1,558	1,719	1,791	1,695	8,214	222.0
Burglary	2,200	2,656	2,490	3,212	3,051	13,609	367.8
Larceny	10,184	10,243	5,214	6,181	6,157	37,979	1,026.4
Motor vehicle theft	1,031	1,228	1,462	1,725	1,887	7,333	198.2
Property crime	13,415	14,127	9,166	11,118	11,095	47,826	1,292.5
Total	14,866	15,685	10,885	12,909	12,790	54,345	1,468.7



CHILD HEALTH INDICATORS

The following information is no longer available on the website:

High school dropouts (dropouts per 1000 persons Grades 9-12)

Children Ages 0-17 Impacted by Domestic Violence (Percentage of all children ages 0-17)

Offenses Against Person—Juvenile Court Referrals (Percentage of total juvenile court referrals)

Alcohol-Related Juvenile Court Referrals (Percentage of juvenile court referrals)

Table 22

Child Indicators: Education 2016	Sargent County		North Dakota	
Children ages 3 to 21 enrolled in special education in public schools	100	15.9%	14,426	13.2%
Four-year high school cohort graduates	92.7%		88.7%	
Average expenditure per student in public school	\$14,303		\$11,418	

Table 23

Child Indicators: Economic Health 2016	Sargent County		North Dakota	
TANF recipients ages 0-19	7	0.8%	4,649	2.3%
SNAP recipients ages 0-18	135	15.9%	37,758	20.3%
Eligible recipients of free or reduced price lunch	197	31.7%	37,928	32.6%
Medicaid recipients ages 0-20	201	21.8%	59,156	28.0%
Median income for families with children ages 0-17	\$75,833		\$75,818	
Children ages 0 to 17 living in low-income families (<200% of poverty)	211	28.3%	50,147	30.5%

Table 24

Child Indicators: Families and Child Care 2016	Sargent County		North Dakota	
Women in labor force, by age of children (ages 0-17)	293	82.5%	59,532	79.4%
Children ages 0-17 living in a single parent family	166	21.4%	39,192	23.4%
Children in foster care	LNE	NA	2,397	1.3%
Victims of child abuse and neglect - services required (Percent of suspected victims)	LNE	NA	1,805	27.2%
Births to mothers receiving prenatal care beginning after first trimester or not at all	LNE	NA	1,612	14.2%

Table 25

Child Indicators: Juvenile Justice 2016	Sargent County		North Dakota	
Children ages 10-17 referred to juvenile court	6	1.7%	3,471	4.9%

*LNE-Low Number Events